



Showcontroller - The new Laser Show Software!

Showcontroller is the brand-new software for laser and multimedia shows.

With Showcontroller it is possible to **operate laser in real-time** or even to **create music synchronous timeline laser shows**.

Due to the large number of **pre-set frames, patterns, and animations**, shows can be designed with ease. The software also provides more than **250 free laser shows**, which can be played back just by the press of a button.

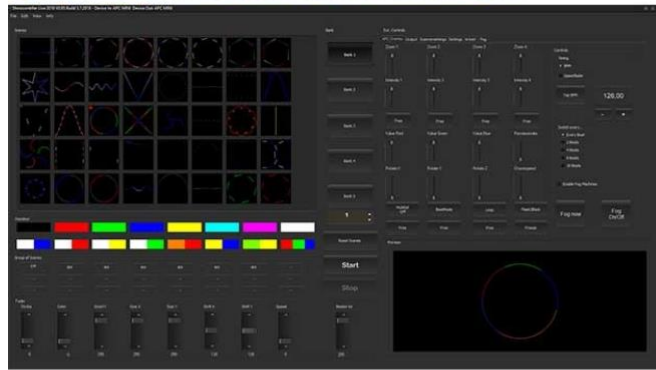
Self-made graphics, logos, and texts can be imported or designed easily.

[**Further Information**](#)

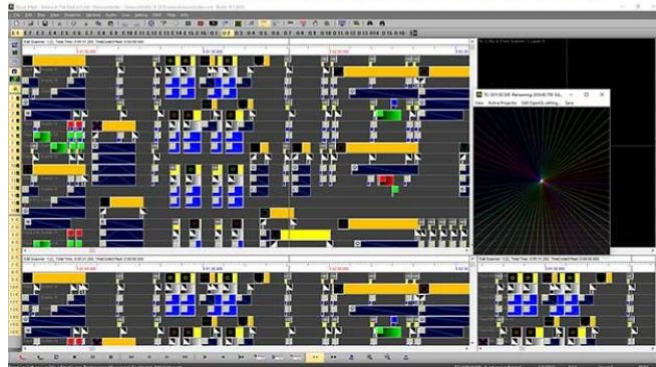
Main Functions of the Showcontroller

- **Live Laser Control**
- music synchronous **timeline laser show** programming
- more than **250 free shows** available
- easy show creation by **Drag-and-Drop**
- **logo and graphics import**
- **MIDI und DMX support**
- up to 20 ShowNet LAN interfaces supported

SHOWCONTROLLER LIVE WINDOW



SHOWCONTROLLER REALTIME WINDOW



[Further Information](#)

Your Show - Your Control

Showcontroller completely excludes enforced software updates. That means: **You can decide**, if and when you do an update.

No forced update while you're programming or starting a show. And if you want to do an update we won't force you to register on any portals. All you need to do is to visit the website and to download the update. That's all! We believe the show must go on!



One Software - Many Possibilities

Showcontroller Suite consists of 5 program parts: **Live, RealTime, PicEdit, Tracer, and SVG Tool**

Showcontroller Live

Showcontroller Live is used for **real-time control** of laser systems, for example at live music shows, artistic performances, and all other events, that cannot or must not be pre-programmed. Live is also controllable by MIDI.



[Further Information](#)



Showcontroller RealTime

Showcontroller RealTime can be used to **create timeline-based laser shows**. Laser shapes and animations can be placed on the timeline and synchronized according to the music with a variety of customizable effects relatable to these frames. It is also possible to program several tracks in parallel with a preview window providing a real-time live preview of the programmed elements. Laser output can even be done in real-time while programming.

[Further Information](#)

Showcontroller PicEdit

Create and edit **2D and 3D laser graphics** with the **Showcontroller PicEdit**. This includes not only vector-based laser graphics but also animations.



[Further Information](#)



Showcontroller Tracer

Showcontroller Tracer is specifically designed for re-tracing pixel-based pictures, like JPG files, to a laser-compatible, vector-based format. This tool makes it easy to convert for example logos and integrate them into the laser show.

[Further Information](#)

[Showcontroller SVG](#)

The Showcontroller SVG Tool is used to convert frames and animations from SVG format into a laser vectors format. For example, SVG files can be used from the free 3D animation software Blender or from Adobe Illustrator.



[Further Information](#)



Showcontroller is **available with two different licenses:**

Showcontroller:

Supports up to 3 Laserworld ShowNet Hardware Interfaces (DAC).

Showcontroller PLUS:

Supports more than 3 hardware interfaces (DAC) of different brands, covering the entire range from USB up to high-end LAN interface. All interfaces support DMX in/out. In addition Showcontroller PLUS supports the 3D visualization software REALIZZER as well as the use of Video-Events.



[Further Information](#)



Your contact person at Laserworld:

Richard Schäfer | International Sales Manager

✉ rs@laserworld.com ☎ [+41 \(0\)71 677 80 87](tel:+41716778087)

www.laserworld.com



Laserworld (Switzerland) AG - Kreuzlingerstrasse 5 - 8574 Lengwil / Switzerland

Registered office: 8574 Lengwil / Switzerland - Company number: CH-440.3.020.548-6 - Commercial Registry Kanton

Thurgau - CEO: Martin Werner - VAT No. (Switzerland): 683 180 - UID (Switzerland): CHE-113.954.889 - VAT ID

(Germany): DE258030001 - WEEE-Reg.-No.(Germany): DE 90759352

[Unsubscribe from newsletter](#)