



KASTA LOUNGE / À LA KARTE



LUANDA, ANGOLA
EUROPE/MIDDLE EAST/AFRICA

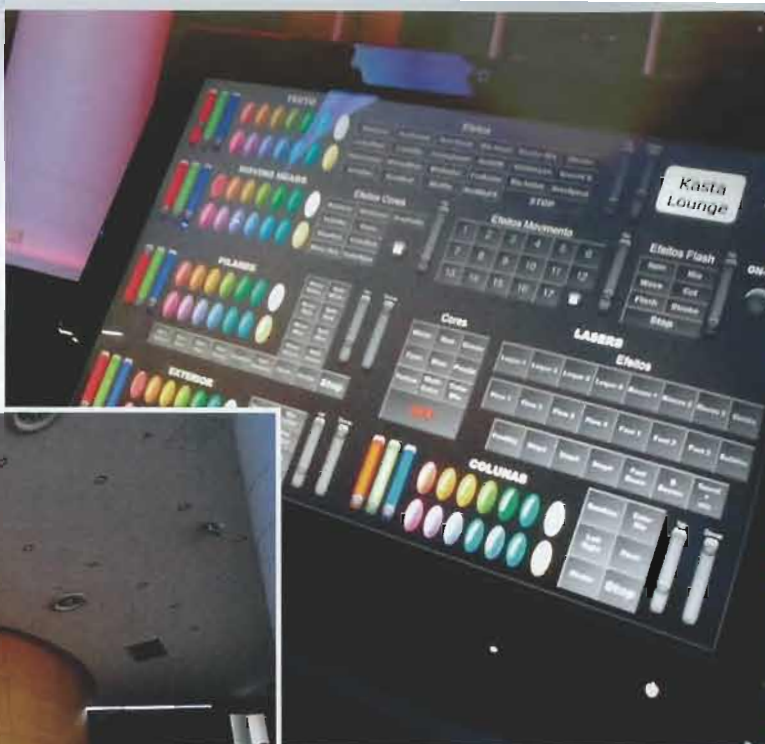
With a 33-year career under his belt and more than 500 entertainment venue installations to his name, Luis Perdigão of Perdigão Audio was well equipped to design and specify the Kasta Lounge discotheque and À La Karte restaurant in Luanda, Angola. After meeting the owner of the two venues in 2010 during the installation of Lookal - another nightlife hotspot - as well as the successful fit out of his home cinema, Luis was called upon once again.

Kasta Lounge and À La Karte are located side by side, and the first aspect Luis had to contend with was the glass paneling on the façade of the building as well as glass countertops inside. The owner wanted the loudspeaker boxes to be as hidden as possible, but still able to achieve optimum sound dispersion, all the while being sympathetic to the décor of the room - which includes, pristine white wood walls, red carpets and stone floors - implemented by architect, Cristina Barros.

On the main dancefloor at Kasta Lounge, Luis selected eight Electro-Voice PX2152 high output, two-way loudspeakers for their long throw capabilities. Luis said: "The configuration of the audio works well because the Electro-Voice PX2152's are distributed evenly throughout the venue, right up to the glass at the front of the room and around the DJ booth, ensuring full sound projection within the space."

The loudspeakers are supplemented by two sets of subwoofers, firstly four Dare Pro Audio HL182 twin 18-inch bass horn units which provide a powerful bass throughout the room and secondly, eight D.A.S. Audio Sub-18G bass enclosures to achieve a punchy sound in the centre of the dancefloor. "The four Dare Pro Audio subwoofers are split into pairs and sit either side of the door so not to block access, while the eight Sub-18G subwoofers from D.A.S. Audio are placed in front of the DJ booth. This means there is plenty of constant sound pressure throughout the venue for the 1,000 guests that frequent the club on a nightly basis."

Due to the factory parameters of the Electro-Voice PX2152 units, it was only necessary to provide processing for the subwoofers, Luis



selected a single Electro-Voice DC One two-in, six-out sound system processor for the job. This DSP unit allows the venue's sound engineer to access and alter the EQ and crossover points of the sound system as well as have control over the dynamics and delays.

Amplification for the main dancefloor system is provided courtesy of Crest Audio, a combination of six Crest Audio CC4000's, two Crest Audio CC2800's and two Crest Audio Pro 9200's. The CC Series of amplifiers is highly reliable and both models are capable of producing transparent high frequency response. Their built-in IGM circuit - a feature exclusive to Crest products - also allows two ohm loads to be driven safely without having to compromise on performance, while the Pro Series amplifiers also provide high power ratings in a compact 2RU.

Besides the main area at Kasta Lounge there is an outdoor terrace - which features eight Electro-Voice Sx300PIX full range, weather resistant loudspeakers powered by an Electro-Voice CPS 4.5 compact four-channel amplifier - and a VIP room, which has been equipped with 16 JBL Control 25 background music loudspeakers with amplification provided by another Electro-Voice CPS 4.5 amplifier.

"Above all the DJ wanted Pioneer, as its CD players are technically more advanced and more robust," commented Luis. He adhered to the requests of the DJ and specified three Pioneer CDJ-2000 multiplayers, one Pioneer DJM-900 mixer and two Technics SL-1210 Mk5 turntables plus a Rane mixer to be used for vinyl. There are two D.A.S. Audio DR-115A bass loudspeakers and a single D.A.S. Audio Avant 18A powered, bass-reflex subwoofer for DJ monitoring. Luis also completed the lighting and visual design at the discotheque, opting for a combination of intelligent lighting fixtures, colour changing LEDs and a nine metre curved projection screen. A total of 16 Martin Professional MAC 101 compact moving heads and six ►

TECHNICAL INFORMATION

SOUND

KASTA LOUNGE: 8 x Electro-Voice PX2152 loudspeaker; 4 x Dare Pro Audio H182 subwoofer; 8 x D.A.S. Audio Sub-18G subwoofer; 1 x Electro-Voice DC One processor; 6 x Crest Audio CC4000 amplifier; 2 x Crest Audio CC2800 amplifier; 2 x Crest Audio Pro 9200 amplifier; 8 x Electro-Voice Sx300PIX loudspeaker; 2 x Electro-Voice CPS 4.5 amplifier; 16 x JBL Control 25 loudspeaker; 2 x D.A.S. Audio DR-115A bass loudspeaker; 1 x D.A.S. Audio Avant 18A subwoofer; 3 x Pioneer CDJ-2000 multiplayer; 1 x Pioneer DJM-900 mixer; 2 x Technics SL-1210 Mk5 turntable; 1 x Rane DJ mixer
A LA KARTE: 24 x Electro-Voice FN 6.2 flush mounted loudspeaker; 6 x Electro-Voice Evid C12.2 coaxial loudspeaker; 2 x Electro-Voice PA2400 amplifier

LIGHTING / VISUAL

KASTA LOUNGE: 16 x Martin Professional MAC 101 compact moving head; 6 x Studio Due Shark 250 moving head; 4 x Martin Professional Atomic 3000 DMX strobe; 4 x Laserworld CS-2000 RGB laser; 1 x Laserworld PM-2800 RGB laser; 2 x Antari Z1500 fog machine; 94 x 18W RGB downlight; 28 x 3W RGB downlight; 18 x 12W RGB fixture; 8 x 75W LED wall washers; 3 x e:cue Butler DMX/RDM engine with the e:cue Software Suite; 1 x nine-metre curved projection screen; 3 x Panasonic PT DX610 6500 compact projector; 1 x Panasonic AW RP50 control unit; 1 x Roland VR-5 video mixer
A LA KARTE: 76 x Proled 18W RGB LED; 86 x Proled 3W RGB LED; 32 x Proled RGB LED strip; 16 x Proled 27W RGB LED

www.perdigaoaudio.eu



Studio Due Shark 250 moving heads have been mounted above the dancefloor. "I selected the Martin Professional MAC 101's as an LED option as most washlights are LED nowadays, while the Studio Due Shark 250's, I opted for because I have not yet found an LED fixture available on the market with the same power as these discharge lamps," explained Luis. These intelligent lighting fixtures sit along side a number of effects, which include four Martin Professional Atomic 3000 DMX strobes, four Laserworld CS-2000 RGB lasers, one Laserworld PM-2800 RGB laser and two Antari Z1500 fog machines. For decorative lighting in and around the dancefloor area Luis installed 94 18W RGB downlights - 86 in the ceiling, and eight on the interior columns of the façade - 28 3W RGB downlights on the other interior columns and 18 12W RGB fixtures on the dance platforms. LED strips and further downlights continue to dominate in the VIP room, the entrance hall, the bar and the stairs, while outside on the terrace, eight 75W LED wall washers were chosen for subtle mood lighting.

"For control we have three e:cue Butler DMX/RDM engines combined with the e:cue Software Suite and firmware, which was made by us on a PC. This package controls all the effects on the dancefloor as well as all the decorative lighting from the four zones in the venue," Luis explained. "Initially the DMX lines were too long and we had many problems with the DMX signal, so we added several DMX splitters and 120 ohm resistors at the end of all the lines to prevent

the downlights from losing their addresses." After some perseverance and alterations Luis and his team got the control element just right, before moving onto the visual aspect. For this, three Panasonic PT DX610 6500 compact projectors provide vivid, crisp and colourful images for the nine metre screen at Kasta Lounge. The projectors are accompanied by a Panasonic AW RP50 control unit and a Roland VR-5 video mixer.

Next door at the À La Carte restaurant, Luis continued his LED lighting theme, selecting a variety of Proled RBG LED strips for the ceiling, the bar area and the terrace.

He also chose to stay with the same manufacturer on the audio side, but selected different products due to the differing specification. In the restaurant, music was required to be more of a background feature rather than the main focus, so Luis opted for ceiling speakers from Electro-Voice. A total of 24 Electro-Voice FN 6.2 flush mounted loudspeakers are installed alongside six Electro-Voice Evid C12.2 coaxial loudspeakers, all of which are powered by two Electro-Voice PA2400 dual 400W per channel power amplifiers.

Luis had a rather distinctive task for this project, combining the two venues so they appeared seamless on the one hand, yet giving each space it's own identity. He for one believes he succeeded in what he set out to achieve as he summed up the installation as "one of the best projects I have completed in my 33-year career." 